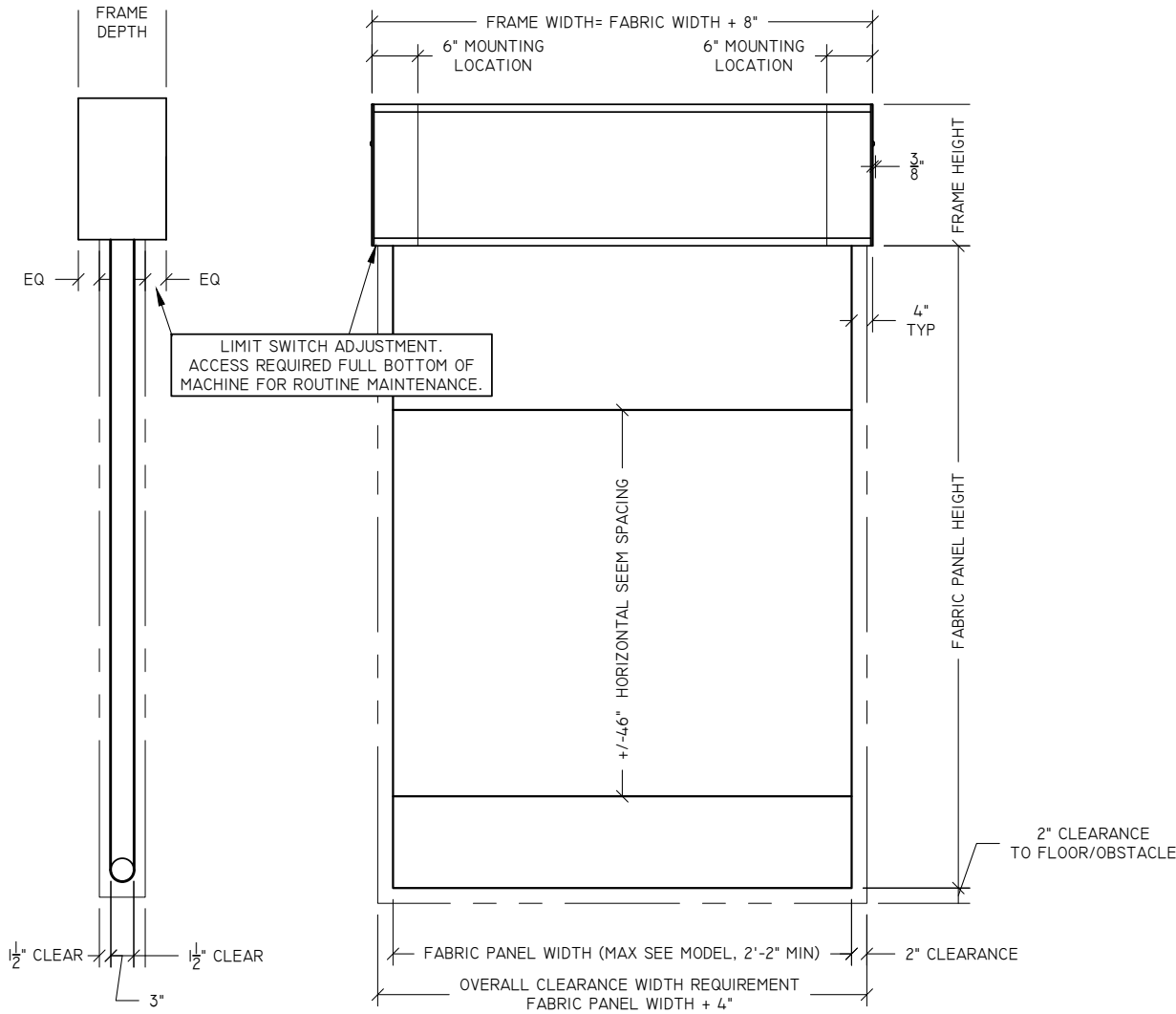
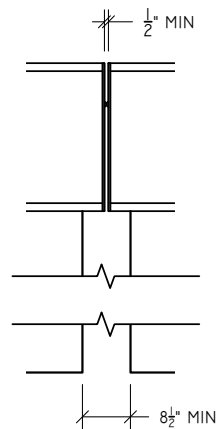


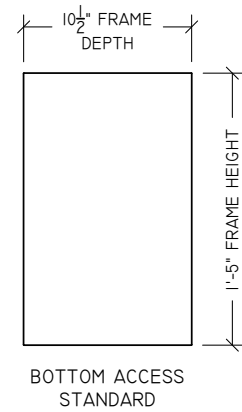
ALL COVER PANELS ARE REMOVABLE. ACCESS TO FULL BOTTOM OF MACHINE FOR ROUTINE MAINTENANCE.



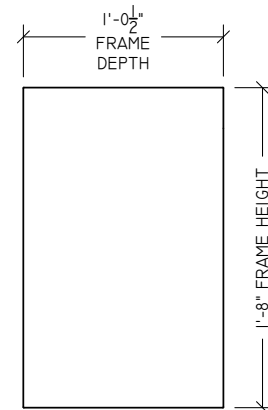
1 ASSEMBLY NOT TO SCALE



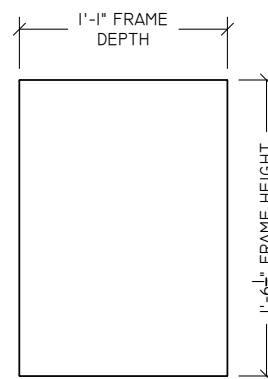
2 FRAME TO FRAME NOT TO SCALE



3 RW12-WW NOT TO SCALE
12'-0" MAX DEPLOYED HEIGHT
15'-0" MAX FABRIC WIDTH



4 RW20-WW NOT TO SCALE
20'-0" MAX DEPLOYED HEIGHT
12'-0" MAX FABRIC WIDTH



5 RW30-WW NOT TO SCALE
30'-0" MAX DEPLOYED HEIGHT
7'-0" MAX FABRIC WIDTH

MODEL NUMBER

R W 30 - WW

ROLLER WOOL PANEL HEIGHT WIDE WIDTH

ACOUTUNE COORDINATION AND OPERATION NOTES

- BANNER MACHINES MUST BE INSTALLED IN A MANNER AND LOCATION THAT PERMITS REASONABLE ROUTINE ACCESS FOR MAINTENANCE, ADJUSTMENT OF LIMIT SETTINGS, REPAIR, CLEANING, AND WARRANTY WORK. PROVISION OF SUCH ACCESS AND ACCESS EQUIPMENT IS THE SOLE RESPONSIBILITY OF OTHERS.
- EACH MACHINE FRAME AND FABRIC ASSEMBLY MUST BE INSTALLED LEVEL WITHIN 1/8" ACROSS THE WIDTH AND DEPTH OF THE FRAME.
- RIGID ATTACHMENT TO STRUCTURE IS REQUIRED FOR PROPER OPERATION TO PREVENT DAMAGE AND MAINTAIN SERVICE LIFE.
- THE RELATIVE HUMIDITY OF THE ROOM SHOULD BE MAINTAINED BETWEEN 30-60%, WITH 40-45% BEING OPTIMAL, PER OSHA GUIDELINES. ONCE THE BANNERS ARE ACCLIMATED AND COMMISSIONED TO AN ENVIRONMENT, ROUTINE RE-SETTING OF LIMITS MAY BE REQUIRED IF THE RELATIVE HUMIDITY IS NOT MAINTAINED AT A CONSTANT +/-10%.
- BANNER MACHINES MUST BE KEPT HORIZONTAL AND CAN NOT BE TIPPED, ROLLED OR TILTED DURING SHIPPING AND INSTALLATION.
- HOISTING POINTS MUST BE WITHIN 1' OF LIFTING BAND OR MOUNTING LOCATIONS. MACHINES OVER 18' IN LENGTH MUST BE HOISTED BY THREE OR MORE LIFTING POINTS.
- FIELD VERIFICATION OF ALL DIMENSIONS PRIOR TO FABRICATION IS REQUIRED.
- TO CLEAN FABRIC OF MINOR DUST AND DEBRIS USE A NEW HORSE HAIR BRISTLE DUST BRUSH AND VACUUM IF NECESSARY. NEVER USE WATER OR ANY LIQUIDS ON FABRIC.
- DUE TO THE NATURE OF A NATURAL WOOL FABRIC, THERE MAY BE SOME RIPPLING, SURFACE VARIATIONS, AND DIMENSIONAL SHRINKAGE OR STRETCH. THESE DO NOT AFFECT THE ACOUSTIC PERFORMANCE OF THE BANNER, AND THEY ARE NOT CONSIDERED DEFECTS.
- ACOUROLL BANNERS USE TUBE MOTORS: 0.32 HP, 120 VAC, 1φ, 60Hz, 2.1A TUBE MOTOR W/ ROTARY LIMITS.
- MULTIPLE PANELS ON A SINGLE MACHINE IS NOT AVAILABLE ON WIDE WIDTH MODELS.
- DUTY CYCLE IS 1 COMPLETE MOVEMENT (STORED TO DEPLOYED AND BACK TO STORED). THERMAL SAFETY WILL TRIP WHEN MOTOR HITS COMPLETE DUTY CYCLE. MOTOR WILL NEED TO COOL BEFORE THERMAL SAFETY WILL ALLOW IT TO MOVE AGAIN, APROX. 10 MIN.

ACOURLL® Banner Assembly Weight (lbs)				
DEPLOYED FABRIC HEIGHT	FABRIC PANEL WIDTH			
	7'-0"	12'-0"	15'-0"	
RW12-WW	8'-0"	102	143	168
	12'-0"	110	156	185
RW20-WW	16'-0"	118	170	N/A
	20'-0"	126	184	N/A
RW30-WW	26'-0"	138	N/A	N/A
	30'-0"	144	N/A	N/A

REV.	DATE:	BY:	DESCRIPTION:
1	3/13/2025	WJC	RW30-TW-WW UPDATE

8053 POTRANCO ROAD
SAN ANTONIO, TEXAS 78251
210-684-0091
210-684-4557 FAX

THIS DOCUMENT IS THE PROPERTY OF TEXAS SCENIC COMPANY, INC. TITLE TO THIS DOCUMENT AND ALL RIGHTS HEREIN ARE RESERVED AND WILL REMAIN THE PROPERTY OF TEXAS SCENIC COMPANY, INC. IT IS NOT TO BE REPRODUCED, COPIED, OR TRANSMITTED IN ANY MANNER WITHOUT THE WRITTEN PERMISSION OF TEXAS SCENIC COMPANY, INC. THE DESIGNER'S SEAL AND SIGNATURE ARE SUBJECT TO THE FOREGOING.

TSC TEXAS SCENIC COMPANY

ARCHITECT: _____
CONSULTANT: _____
CONTRACTOR: _____
DRAWN BY: _____
CHECK BY: _____
DATE: 12/15/2024
JOB NUMBER: _____
WJC TSC

PROJECT: ACOUTUNE ACOURLL
SAN ANTONIO, TX

DWG. TITLE: RW12, 20 & 30 WIDE WIDTH MODEL OPTIONS & CLEARANCE REQUIREMENTS

REV: A SCALE: AS NOTED
DRAWING NUMBER: VA-1.22