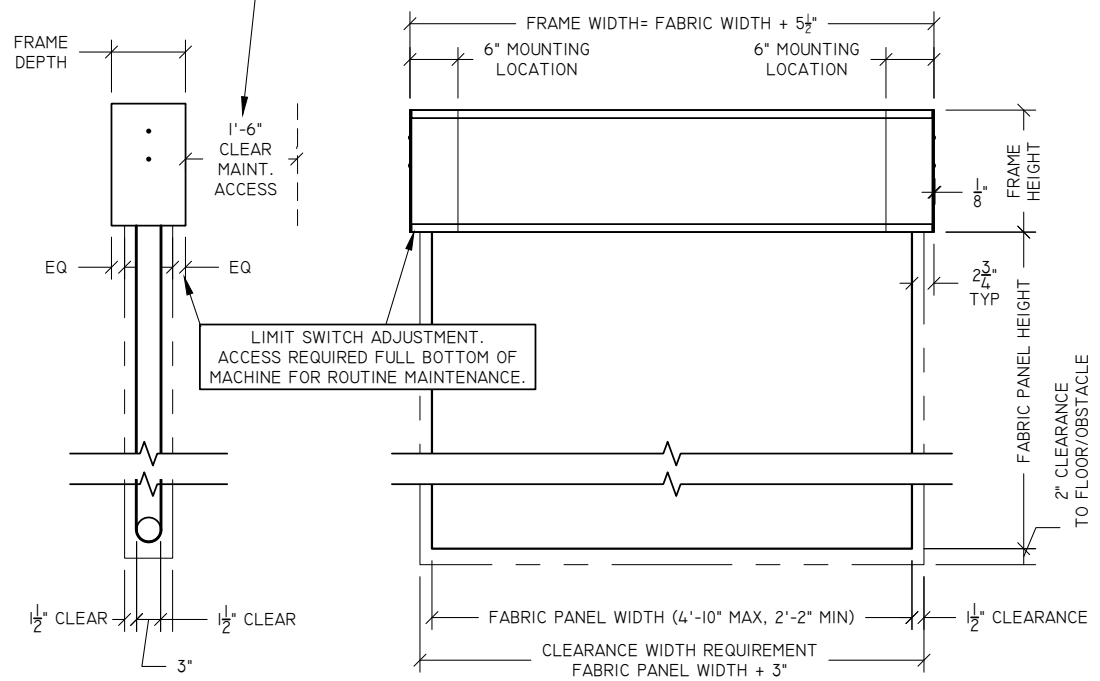
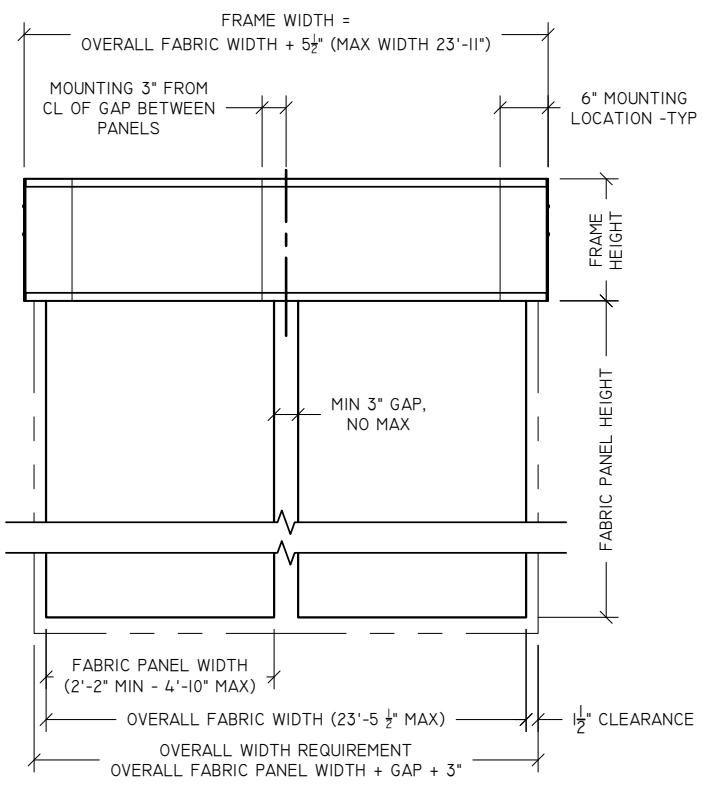


ALL COVER PANELS ARE REMOVABLE. NARROW FRAMES REQUIRE ACCESS TO FULL FRONT OF MACHINE FOR ROUTINE MAINTENANCE.

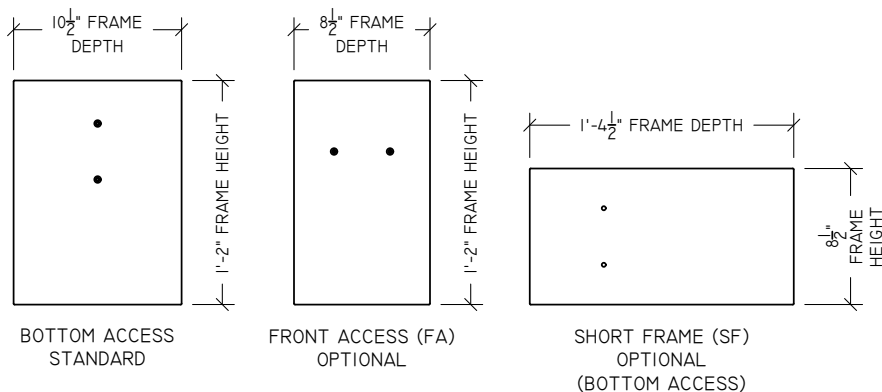
FRONT ACCESS REQ. ONLY ON NARROW STYLE FRAMES



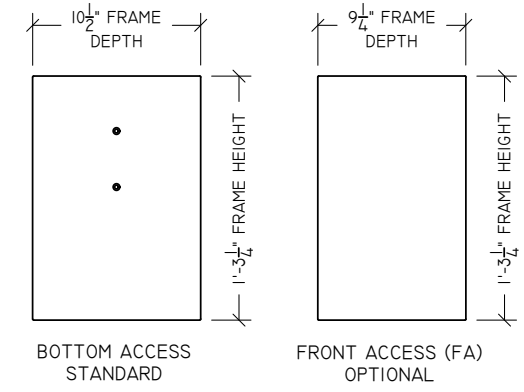
**1 ASSEMBLY** NOT TO SCALE



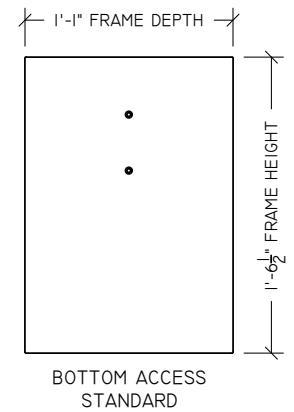
**2 MULTIPLE BANNER (MB)** NOT TO SCALE



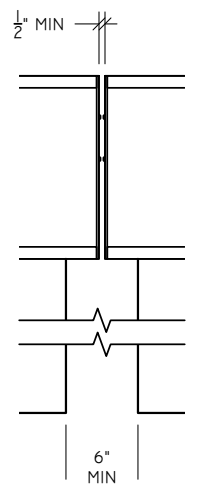
**4 RW12** NOT TO SCALE  
12'-0" MAX DEPLOYED HEIGHT  
MAX 4 PANEL PER MACHINE



**5 RW20** NOT TO SCALE  
20'-0" MAX DEPLOYED HEIGHT  
MAX 2 PANELS PER MACHINE



**6 RW30** NOT TO SCALE  
30'-0" MAX DEPLOYED HEIGHT  
MAX 1 PANELS PER MACHINE



**3 FRAME TO FRAME** NOT TO SCALE

**MODEL NUMBER**



**ACOUTUNE COORDINATION AND OPERATION NOTES**

- BANNER MACHINES MUST BE INSTALLED IN A MANNER AND LOCATION THAT PERMITS REASONABLE ROUTINE ACCESS FOR MAINTENANCE, ADJUSTMENT OF LIMIT SETTINGS, REPAIR, CLEANING, AND WARRANTY WORK. PROVISION OF SUCH ACCESS AND ACCESS EQUIPMENT IS THE SOLE RESPONSIBILITY OF OTHERS.
- EACH MACHINE FRAME AND FABRIC ASSEMBLY MUST BE INSTALLED LEVEL WITHIN 1/8" ACROSS THE WIDTH AND DEPTH OF THE FRAME.
- RIGID ATTACHMENT TO STRUCTURE IS REQUIRED FOR PROPER OPERATION TO PREVENT DAMAGE AND MAINTAIN SERVICE LIFE.
- THE RELATIVE HUMIDITY OF THE ROOM SHOULD BE MAINTAINED BETWEEN 30-60%, WITH 40-45% BEING OPTIMAL, PER OSHA GUIDELINES. ONCE THE BANNERS ARE ACCLIMATED AND COMMISSIONED TO AN ENVIRONMENT, ROUTINE RE-SETTING OF LIMITS MAY BE REQUIRED IF THE RELATIVE HUMIDITY IS NOT MAINTAINED AT A CONSTANT +/-10%.
- BANNER MACHINES MUST BE KEPT HORIZONTAL AND CAN NOT BE TIPPED, ROLLED OR TILTED DURING SHIPPING AND INSTALLATION.
- HOISTING POINTS MUST BE WITHIN 1' OF LIFTING BAND OR MOUNTING LOCATIONS. MACHINES OVER 18' IN LENGTH MUST BE HOISTED BY THREE OR MORE LIFTING POINTS.
- FIELD VERIFICATION OF ALL DIMENSIONS PRIOR TO FABRICATION IS REQUIRED.
- TO CLEAN FABRIC OF MINOR DUST AND DEBRIS USE A NEW HORSE HAIR BRISTLE DUST BRUSH AND VACUUM IF NECESSARY. NEVER USE WATER OR ANY LIQUIDS ON FABRIC.
- DUE TO THE NATURE OF A NATURAL WOOL FABRIC, THERE MAY BE SOME RIPPLING, SURFACE VARIATIONS, AND DIMENSIONAL SHRINKAGE OR STRETCH. THESE DO NOT AFFECT THE ACOUSTIC PERFORMANCE OF THE BANNER, AND THEY ARE NOT CONSIDERED DEFECTS.
- STANDARD MOTORS ARE 0.32 HP, 120 VAC, 1φ, 60HZ, 2.1A TUBE MOTOR W/ ROTARY LIMITS.
- DUTY CYCLE IS 1 COMPLETE MOVEMENT (STORED TO DEPLOYED AND BACK TO STORED). THERMAL SAFETY WILL TRIP WHEN MOTOR HITS COMPLETE DUTY CYCLE. MOTOR WILL NEED TO COOL BEFORE THERMAL SAFETY WILL ALLOW IT TO MOVE AGAIN, APROX. 10 MIN.

\*MB UNITS OVER 20'-0" OVERALL FABRIC WIDTH CAN NOT EXCEED 18'-0" FABRIC PANEL HEIGHT.\*

ACOURROLL® Banner Assembly Weight (lbs)				ACOURROLL® MB Banner Assembly Weight (lbs)				
DEPLOYED FABRIC HEIGHT	FABRIC PANEL WIDTH			DEPLOYED FABRIC HEIGHT	OVRALL FABRIC PANEL WIDTH			
	3'-0"	4'-0"	4'-10"		10'-0"	16'-0"	23'-0"	
RW12	8'-0"	57	67	77	8'-0"	146	197	256
	12'-0"	60	72	83	10'-0"	152	206	269
RW20	16'-0"	65	78	90	12'-0"	158	215	282
	20'-0"	68	82	96	16'-0"	169	234	308
RW30	26'-0"	82	96	106	18'-0"	175	242	321
	30'-0"	86	100	112	20'-0"	180	251	N/A*

REV.	DATE:	BY:	DESCRIPTION:

8053 POTRANCO ROAD  
SAN ANTONIO, TEXAS 78251  
210-684-0091  
210-684-4557 FAX

**TSC TEXAS SCENIC COMPANY**

ARCHITECT: \_\_\_\_\_  
CONSULTANT: \_\_\_\_\_  
CONTRACTOR: \_\_\_\_\_  
DRAWN BY: WJC  
CHECK BY: TSC  
DATE: 12/5/2024  
JOB NUMBER: \_\_\_\_\_

**ACOUTUNE ACOURROLL**

PROJECT: \_\_\_\_\_  
DWG. TITLE: RW12, 20 & 30 TUBE MOTOR MODEL OPTIONS & CLEARANCE REQUIREMENTS  
ARCHITECT: SAN ANTONIO, TX  
SCALE: AS NOTED  
DRAWING NUMBER: VA-1.21