



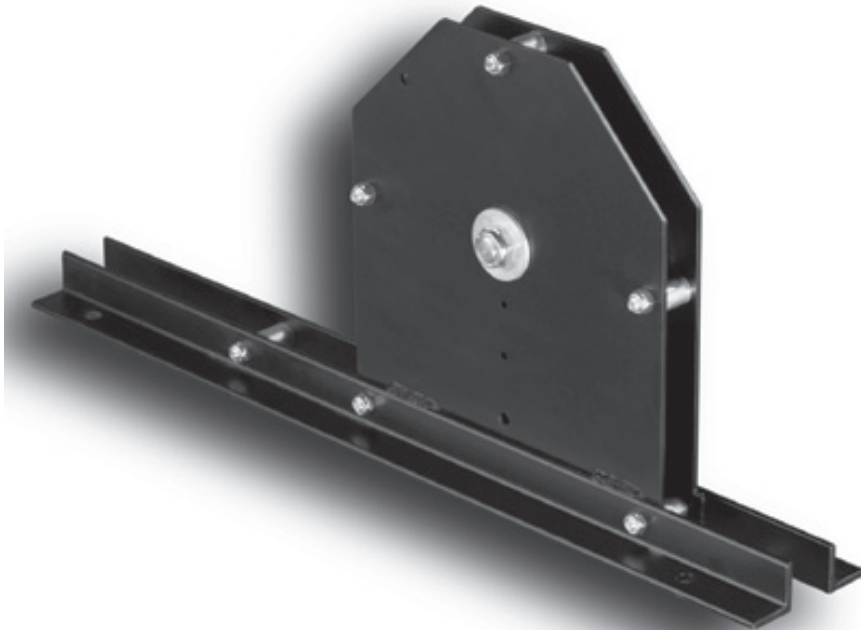
inline[®]
STAGE EQUIPMENT

Steel Upright Loft Block

Standard Features

- 8" plate steel sheave
- 5/8" plated cold rolled shaft
- 5/8" precision sealed ball bearings
- 10 gauge side plates
- Two 1 1/4" x 1 1/4" x 3/16" base angles

Components powder coated prior to assembly



Optional Features

- 8" cast nylon sheave
- 8" injection molded nylon sheave
- Single 1/4" wire rope groove
- Double 1/4" wire rope groove
- Single 3/16" wire rope groove
- Single 1/2" rope groove
- 5/8" tapered roller bearings

